

HUNTER STREET NEWCASTLE

DEVELOPMENT APPLICATION REPORT / MARCH 2022

643-651 HUNTER STREET NEWCASTLE 2300

HUNTER STREET NEWCASTLE

by
CONTEXT Landscape Architecture

for
BLOC
C/O STEWART ARCHITECTURE

©2022

Context and our design team collaborators acknowledge the Traditional Custodians of the land, and recognise Elders past and present.

Through authentic engagement with Aboriginal people and the landscapes within which we work, we strive to deepen our understanding of Country and our relationship with its People.

Document Control

Rev	Date	Description	By	Approved
A	31.03.22	DA REPORT	VF	CW

Contents

Landscape Principles + Vision	03	Ground Floor Level	10
Microclimatic conditions	04	Landscape plan	10
Podium Level		Plant Images	11
Landscape Plan - Master	05	Plant Schedules	12
Pool Zone	06		
Landscape Plan / Precedent Images	06		
Sectional Elevations	07 - 08		
Wellbeing Oasis	09		
Landscape Plan / Precedent Images	09		

LANDSCAPE DESIGN PRINCIPLES + VISION



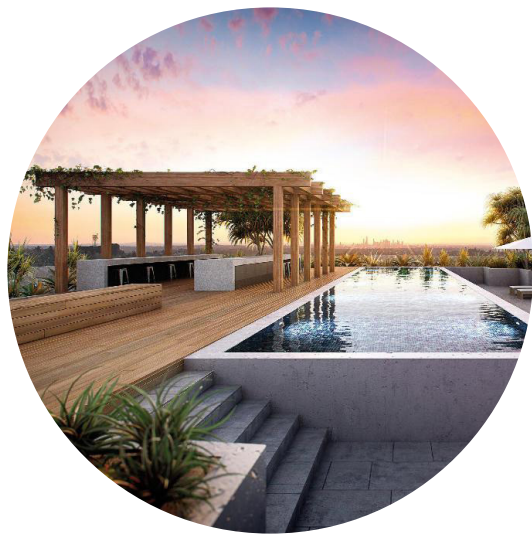
CONNECTION

Elevated green space that is cool and connected to the architecture



EXPERIENCE

Using the different microclimate to create a sequence of landscape experiences on the one podium



SANCTUARY

Creating an urban sanctuary for the residents to enjoy the pool, wonder around the greenery



LIFESTYLE

A resort-style living with areas for social engagement as well as private nodes to enhance the quality of modern life

DESIGN STATEMENT

The landscape has been designed to create communal spaces that complement the architecture while creating beautiful and usable areas for the new residents to enjoy. The species selection has been curated to create a landscape character that is cool, green and lush while ensuring a level of maintenance. The microclimatic conditions including wind, salt and shade have been considered and the species suggested are robust and site responsive.

A pool area is proposed on the eastern side of the landscape podium as this area affords solar access throughout most of the year. The pool has been made accessible by DDA compliant walkway from the internal communal area to the shaded pavilion. In accordance with National Construction Code Specification D3.10 and too enable equitable access to the water a pool hoist will be installed and stored adjoining the pool.

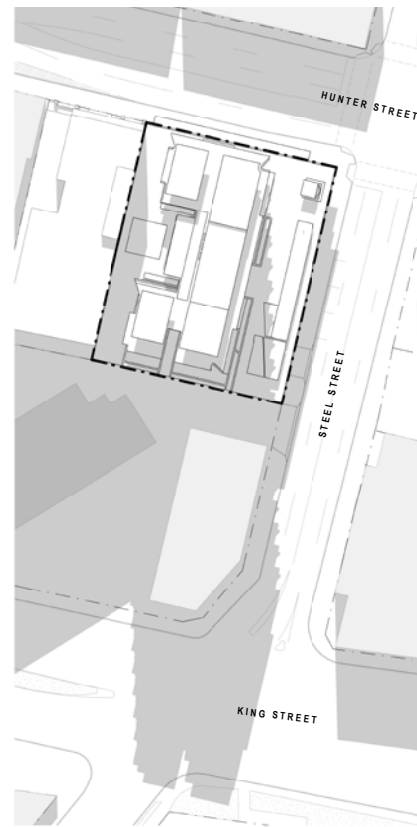
A community garden has been proposed to enable residents to socialise and grow their own fruits and vegetable. As part of this space storage for tools and a compost area have also been proposed to ensure usability as well as general environmental sustainability.

The communal spaces have been designed to be accessible and all external walkways and paving will be in accordance with AS1428.1.

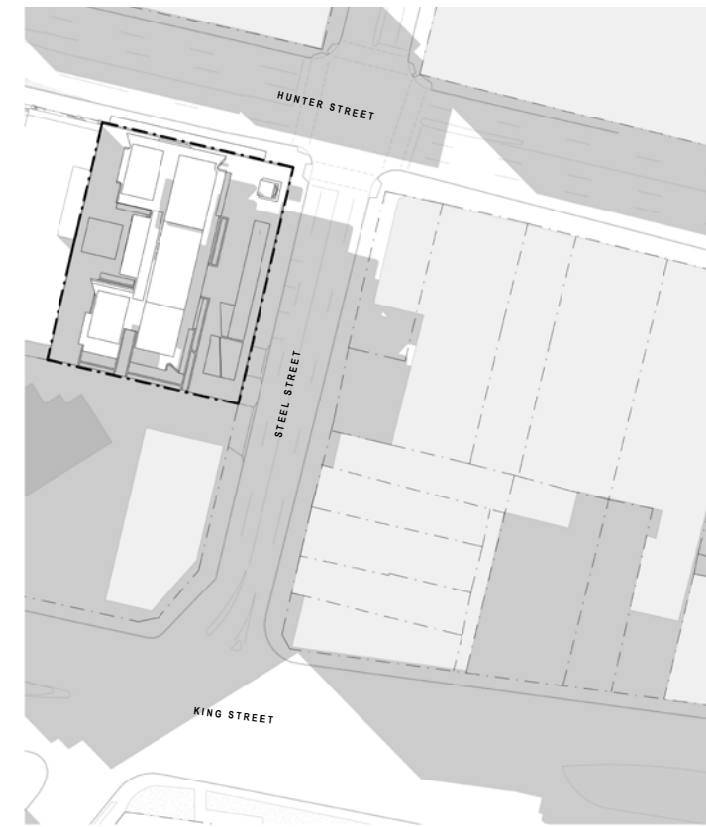
MICROCLIMATIC CONDITIONS - SHADOW DIAGRAMS



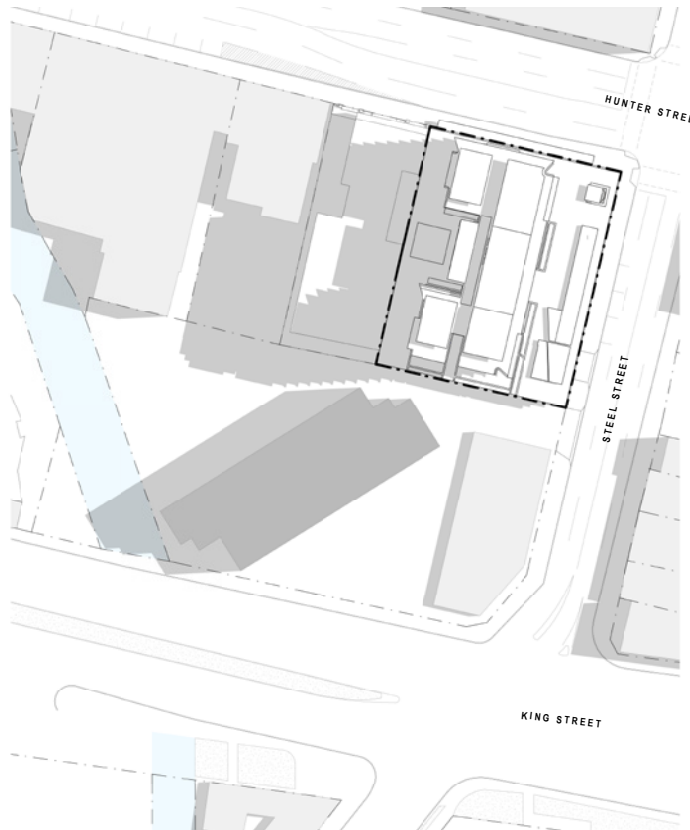
21 JUNE - 0900



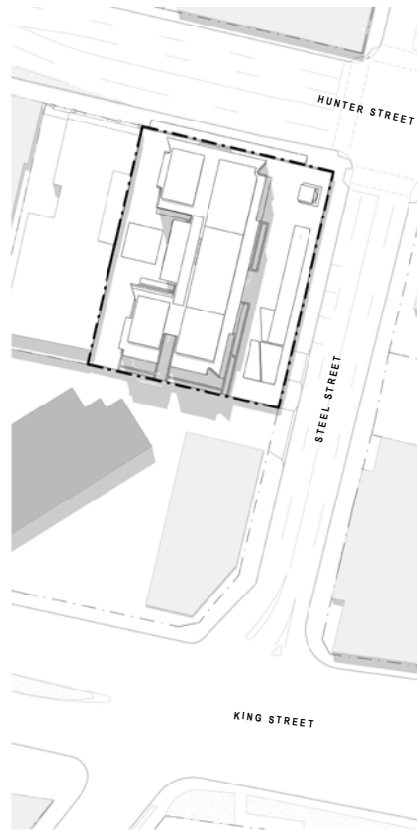
21 JUNE - 1200



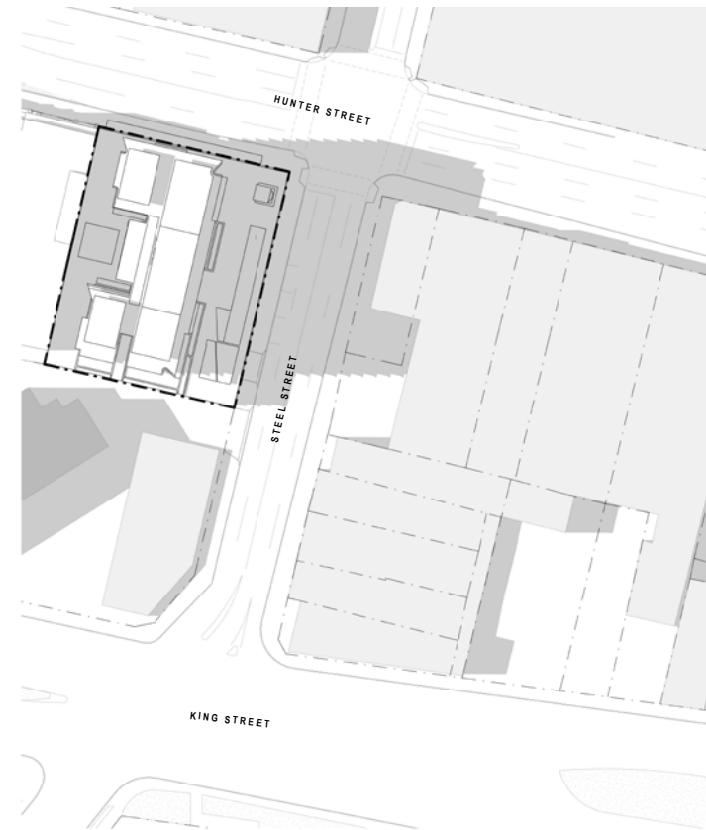
21 JUNE - 1500



21 DEC - 0900



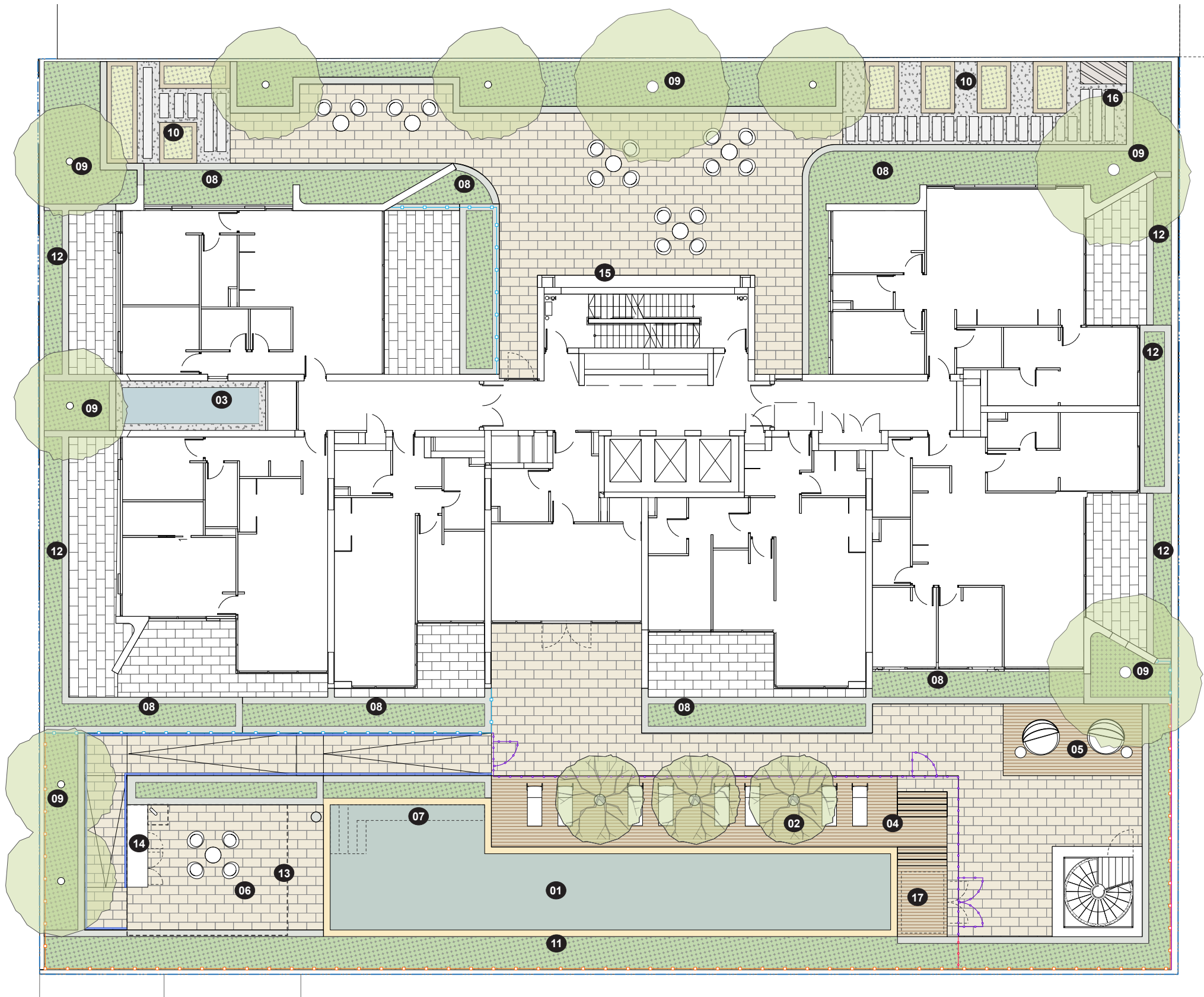
21 DEC - 1200



21 DEC - 1500

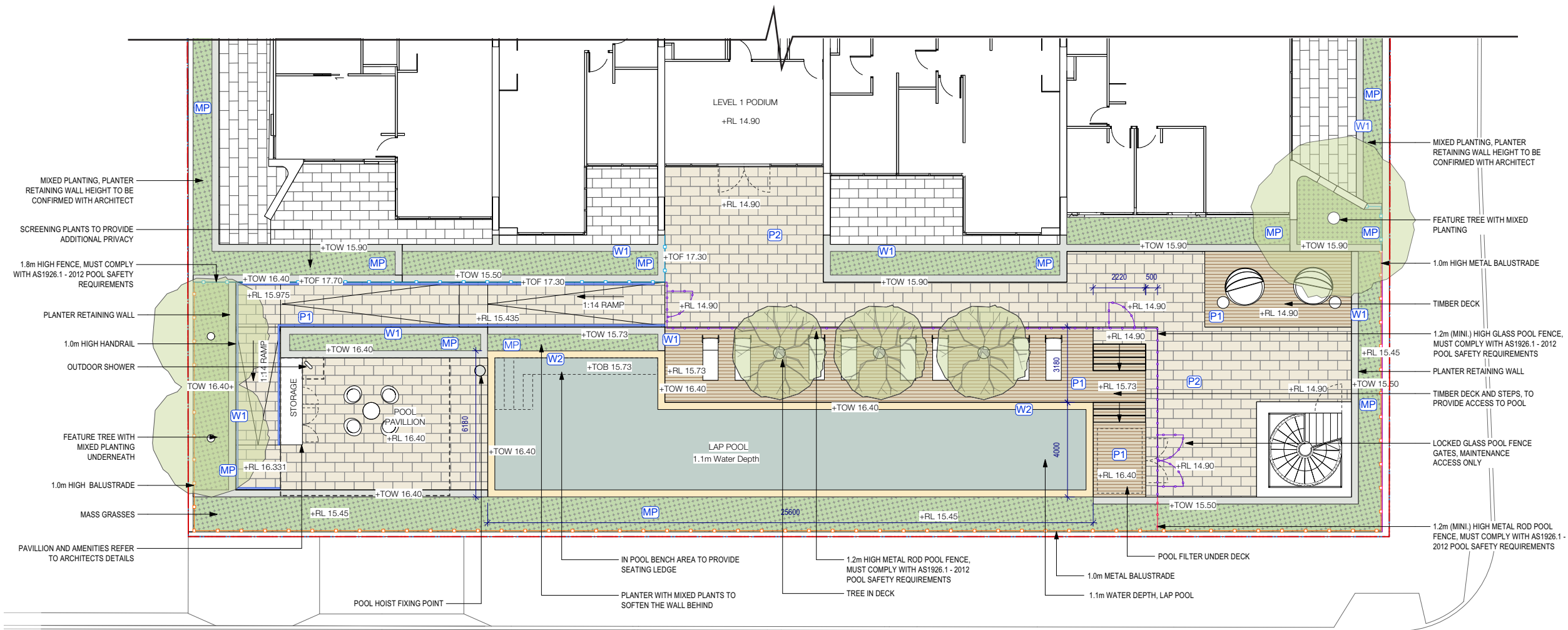


LANDSCAPE MASTER PLAN

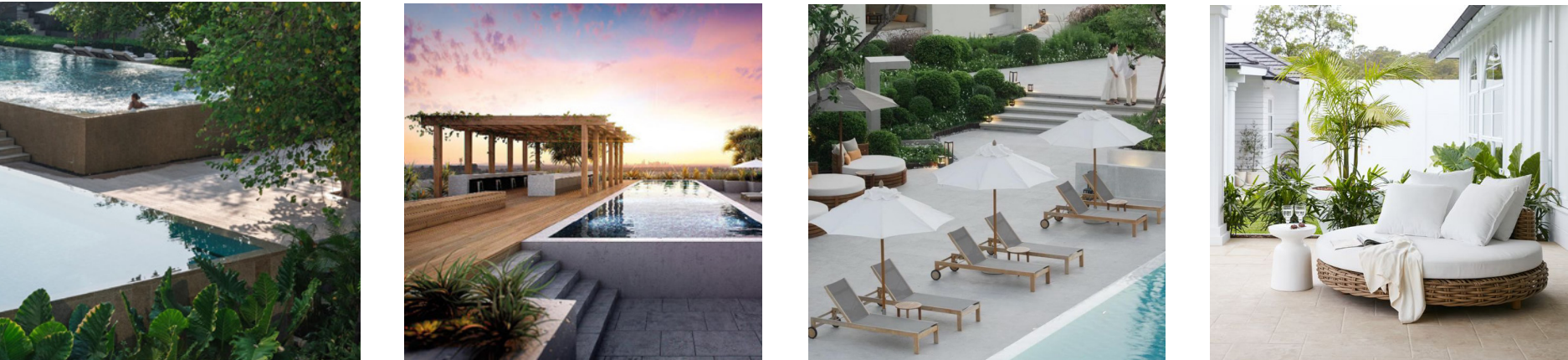


- KEY
- 01 25m Lap Pool
 - 02 Trees in deck
 - 03 Reflective Pond
 - 04 Deck with sun lounges
 - 05 Daybed lounge area
 - 06 Undercover seatings
 - 07 Bench seating in pool
 - 08 Screen planting to create a sense of privacy for the adjoining units
 - 09 Feature tree with mixed planting underneath
 - 10 Community garden area
 - 11 Mass planting of native grasses to soften the pool wall behind
 - 12 Mixed planting
 - 13 Pavillion
 - 14 Amenities
 - 15 Garden tools/ storage
 - 16 Location for compost bin
 - 17 Pool filter under deck

LANDSCAPE PLAN - POOL AREA



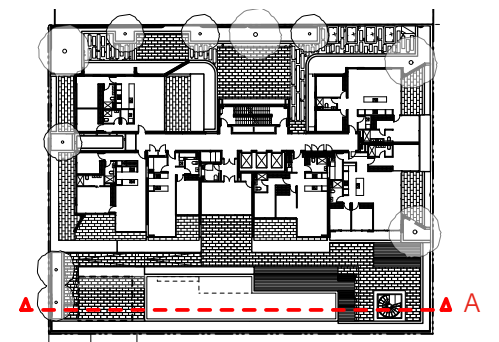
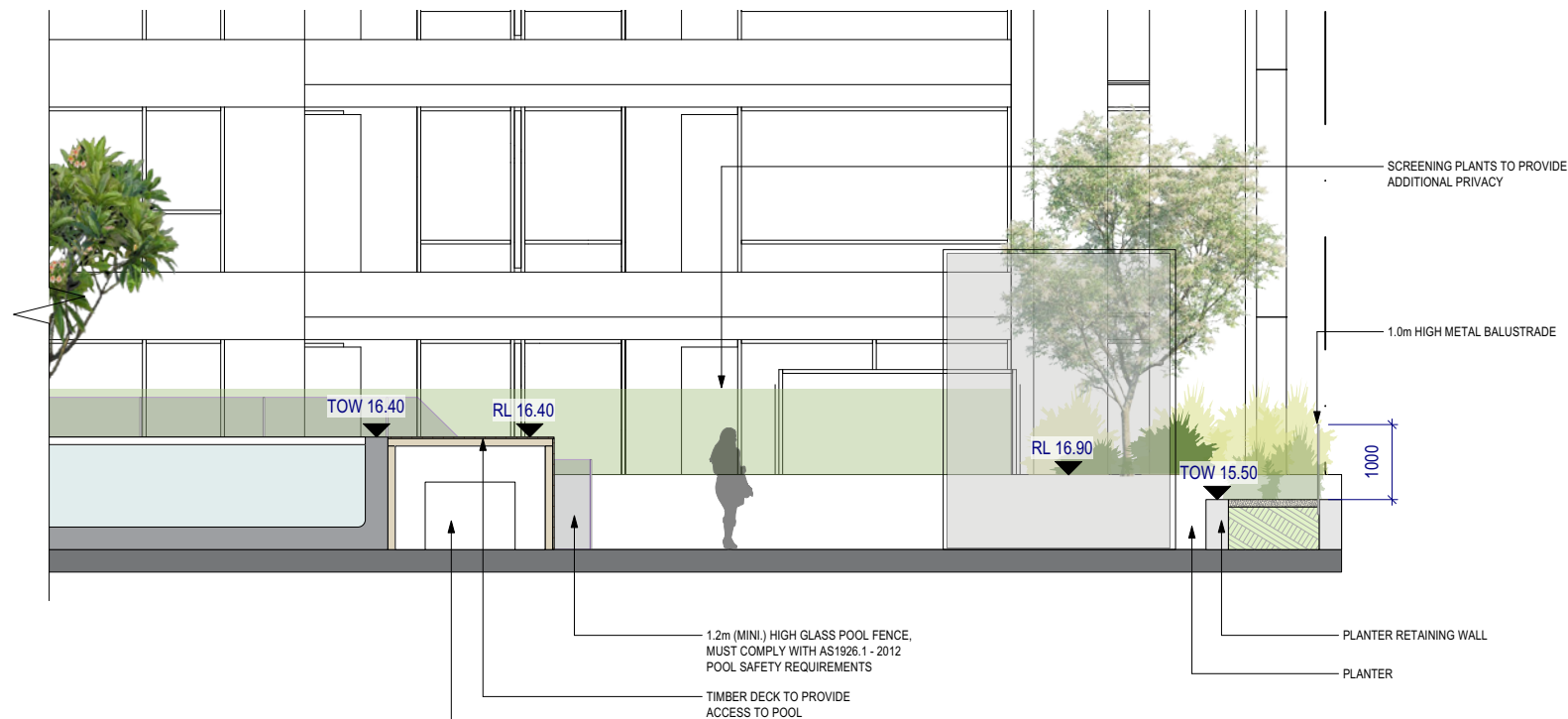
PRECEDENT IMAGES



LEGEND

	PAVING TYPE 1 [P1] HARDWOOD TIMBER DECKING		METAL BALUSTRADE [1.0m]
	PAVING TYPE 2 [P2] PAVING TO COMPLEMENT INTERNAL TILES		GLASS POOL FENCE [1.2m]
	PAVING TYPE 3 [P3] DECORATIVE GRAVEL		METAL ROD POOL FENCE [Height varies]
	STEPPING STONES		PRIVACY SCREEN [Height varies]
	WALL TYPE 1 PLANTER RETAINING WALL		HANDRAIL [1.0m]
	WALL TYPE 2 STONE CLAD POOL WALL		+RL xx.xx RELATIVE LEVELS
	MASS PLANTING [MP] REFER TO PLANT SCHEDULE		+TOF xx.xx TOP OF FENCE
	POOL / POND		+TOW xx.xx TOP OF WALL
	FIXTURE TYPE 1 [FX1] CUSTOM PLANTER BOXES		TREE TO BE RETAINED
	FIXTURE TYPE 2 [FX2] RAISED TIMBER PLANTER		PROPOSED TREE REFER TO PLANT SCHEDULE
	FIXTURE TYPE 3 [FX3] COMPOST BIN		

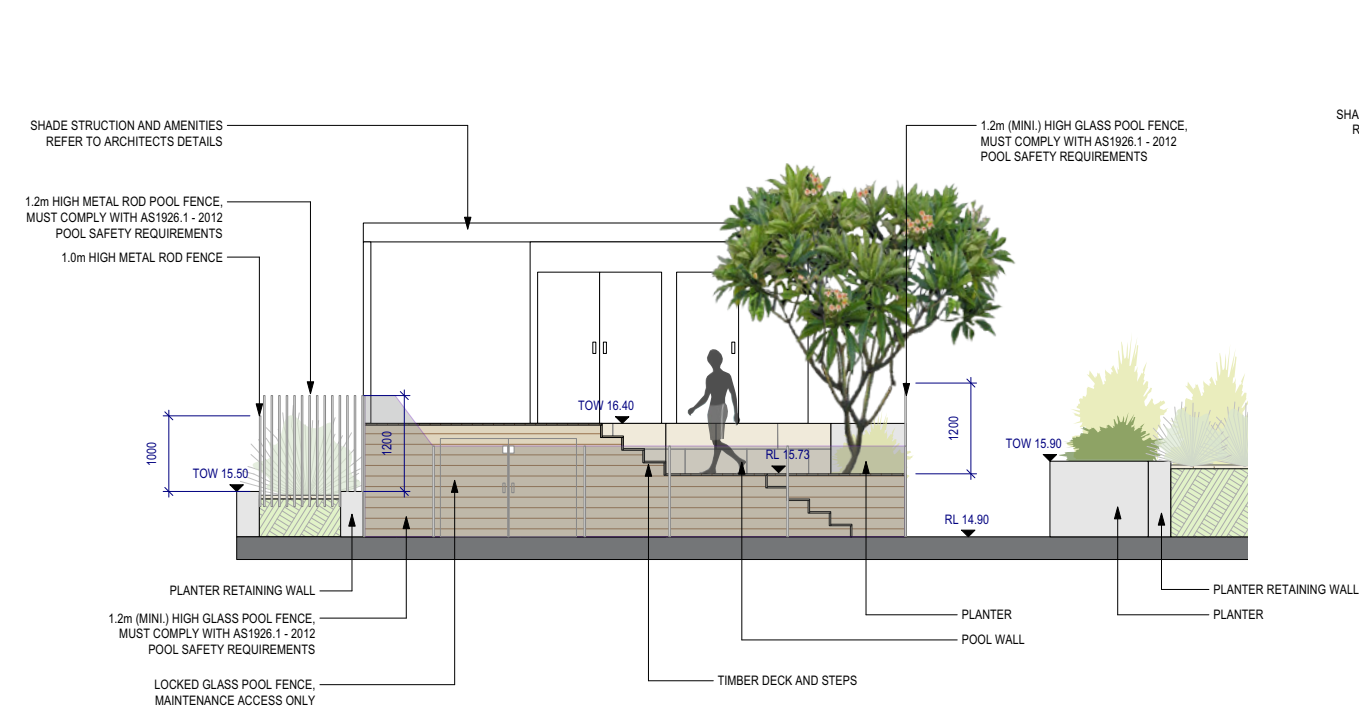
SECTIONAL ELEVATIONS 01



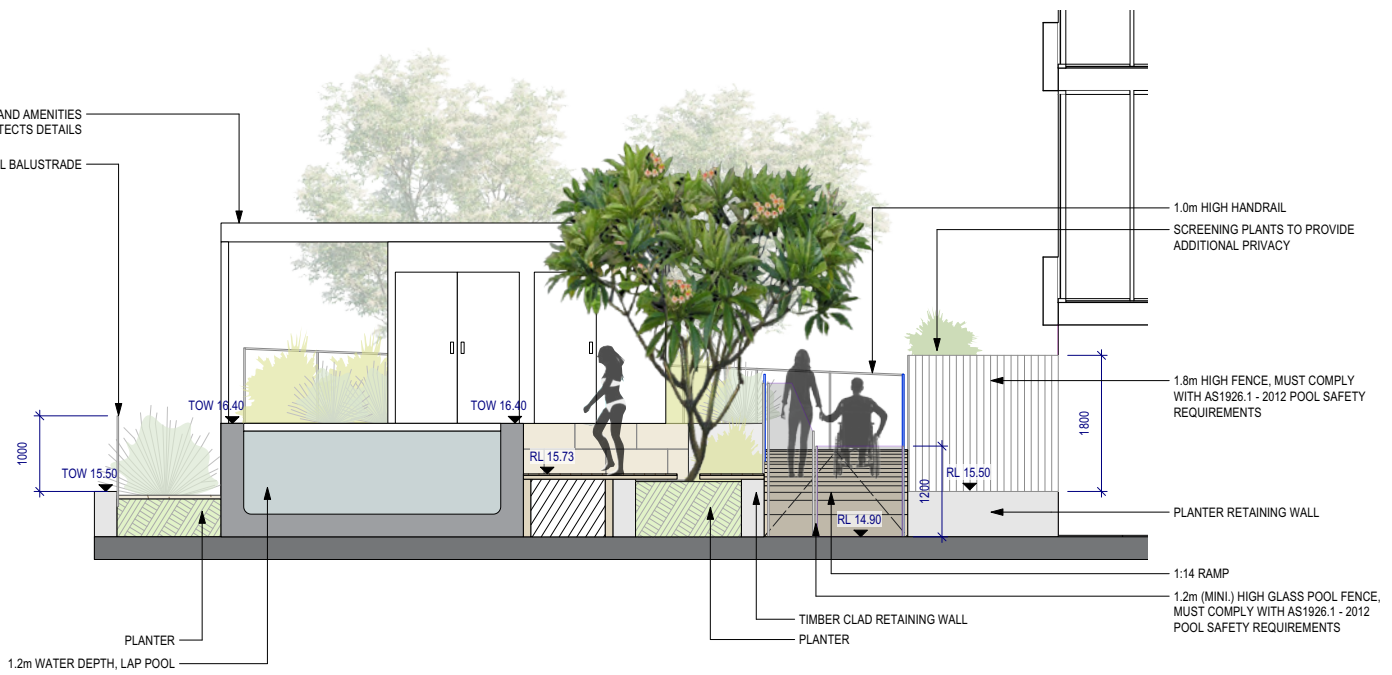
KEY PLAN - NTS



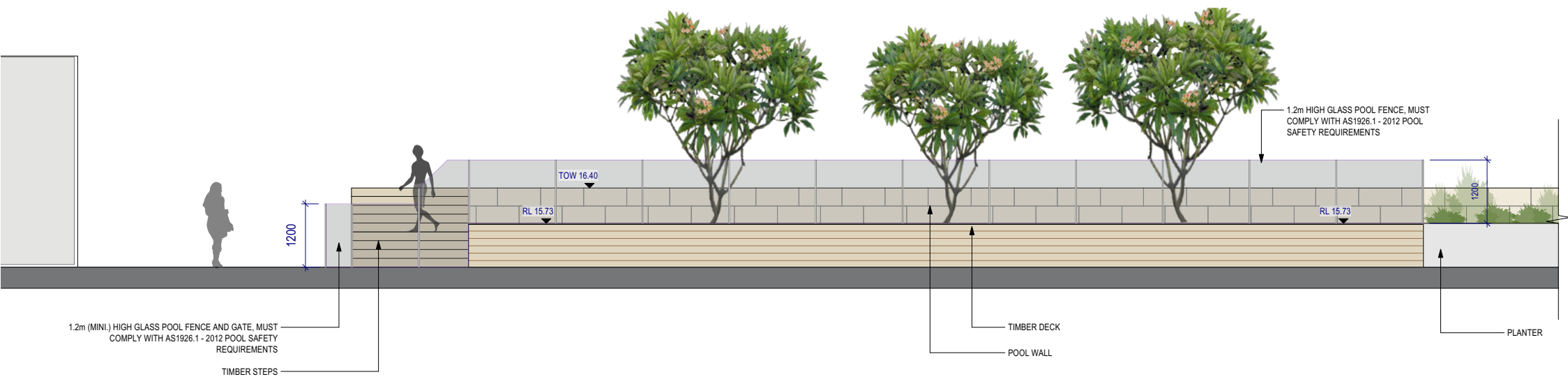
SECTIONAL ELEVATIONS 02



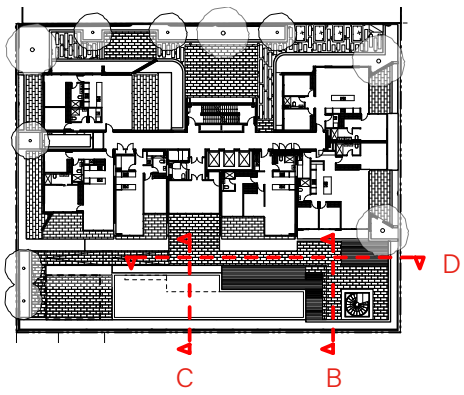
SECTION B



SECTION C



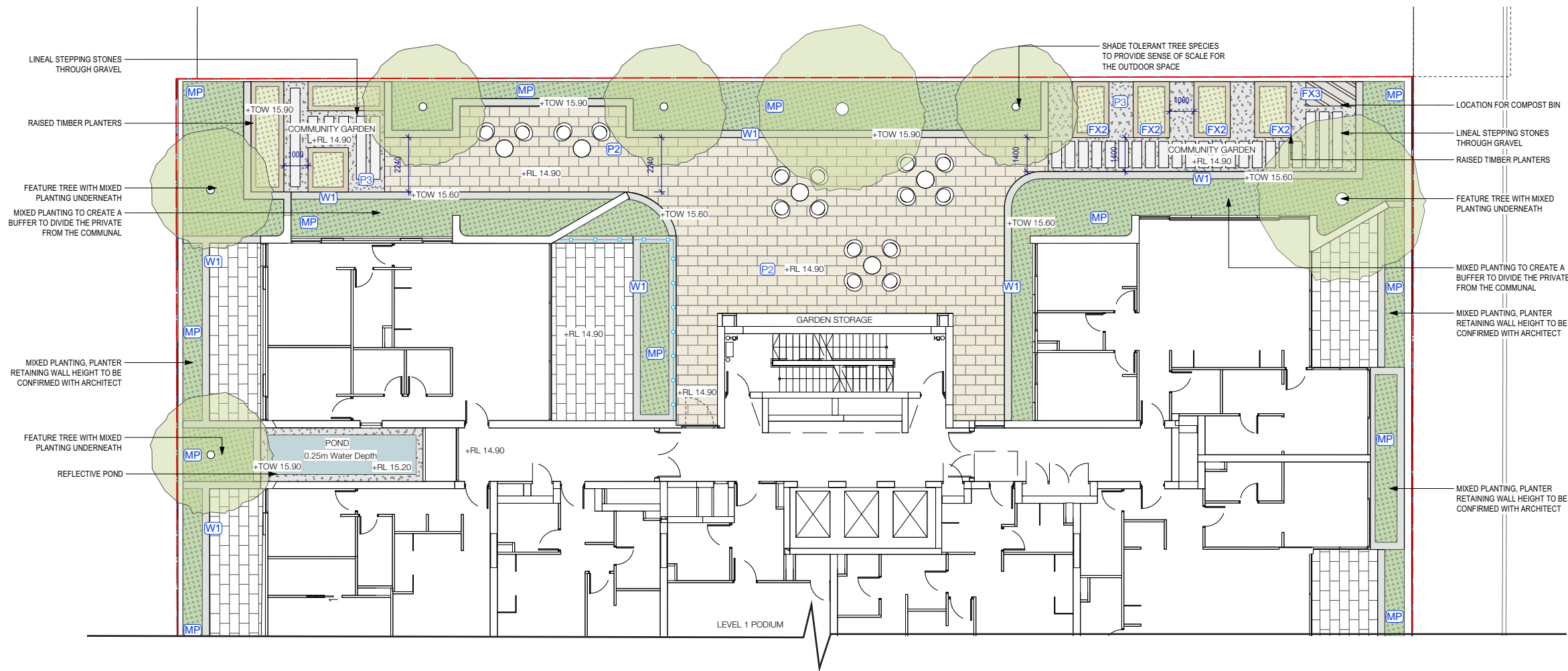
SECTION D



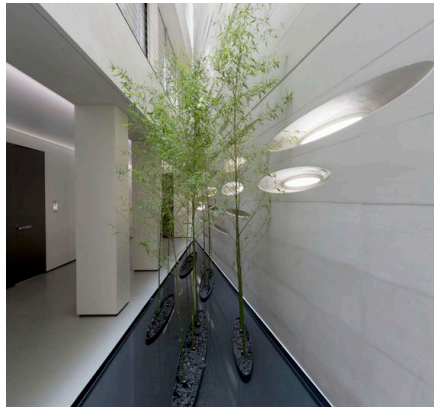
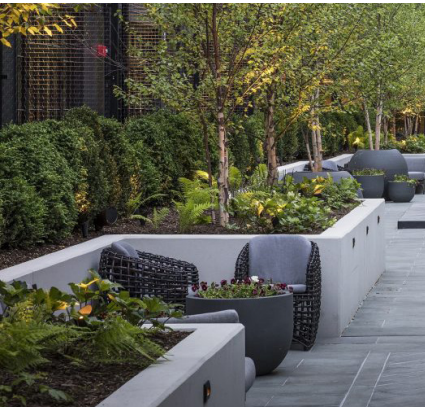
KEY PLAN - NTS



LANDSCAPE PLAN - WELLBEING OASIS



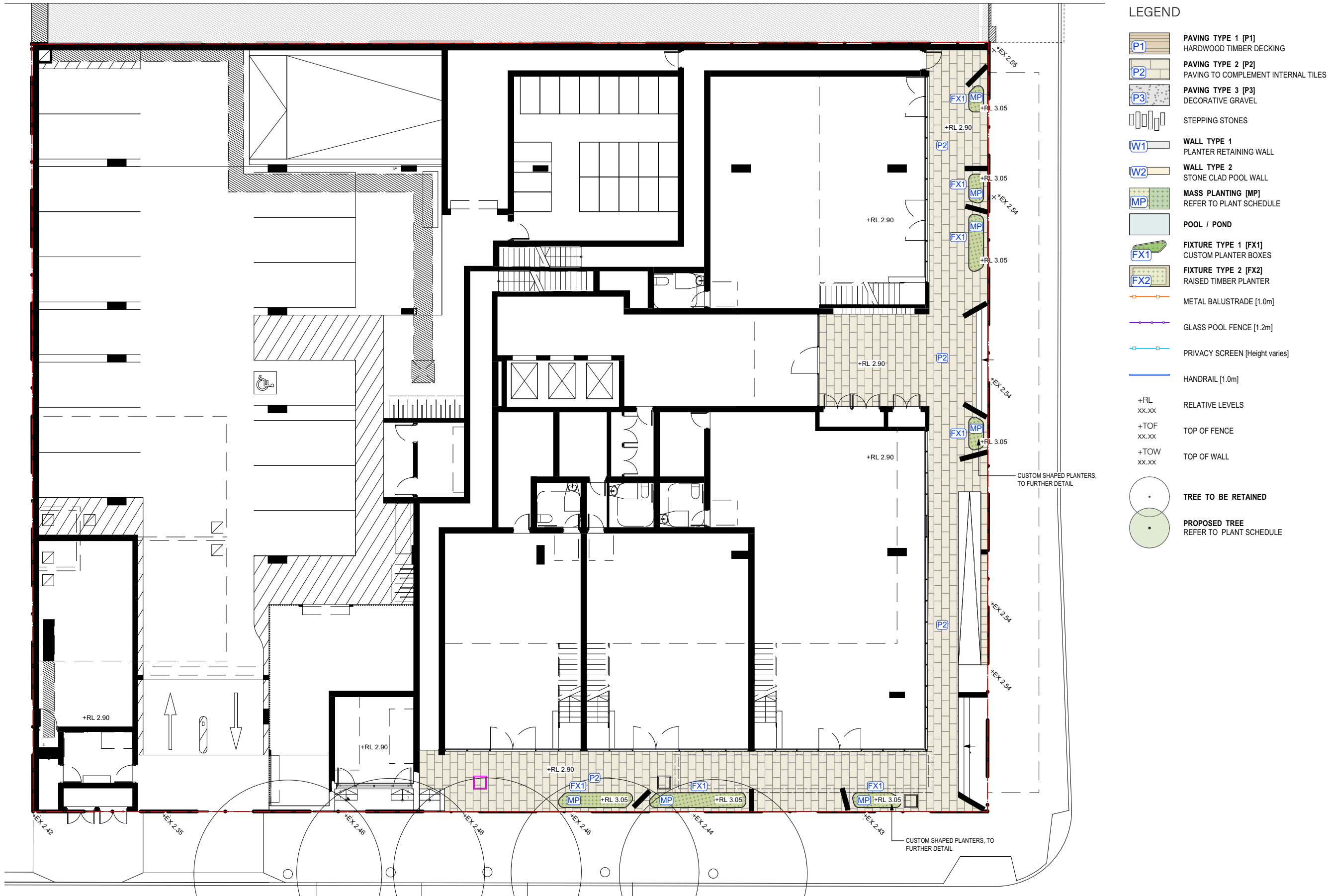
PRECEDENT IMAGES



LEGEND

	PAVING TYPE 1 [P1] HARDWOOD TIMBER DECKING		METAL BALUSTRADE [1.0m]
	PAVING TYPE 2 [P2] PAVING TO COMPLEMENT INTERNAL TILES		GLASS POOL FENCE [1.2m]
	PAVING TYPE 3 [P3] DECORATIVE GRAVEL		METAL ROD POOL FENCE [Height varies]
	STEPPING STONES		PRIVACY SCREEN [Height varies]
	WALL TYPE 1 PLANTER RETAINING WALL		HANDRAIL [1.0m]
	WALL TYPE 2 STONE CLAD POOL WALL		+RL xx.xx RELATIVE LEVELS
	MASS PLANTING [MP] REFER TO PLANT SCHEDULE		+TOF xx.xx TOP OF FENCE
	POOL / POND		+TOW xx.xx TOP OF WALL
	FIXTURE TYPE 1 [FX1] CUSTOM PLANTER BOXES		TREE TO BE RETAINED
	FIXTURE TYPE 2 [FX2] RAISED TIMBER PLANTER		PROPOSED TREE REFER TO PLANT SCHEDULE
	FIXTURE TYPE 3 [FX3] COMPOST BIN		

LANDSCAPE PLAN - GROUND FLOOR



PLANTING PALETTE *

*REFER TO PAGE 12 FOR INDICATIVE SPECIES LIST



Plumeria acutifolia
Frangipani



Tristania laurina 'Luscious'
Water Gum



Podocarpus macrophyllus
Southern Yew



Strelitzia nicolai
Bird of Paradise



Ficus lyrata
Fiddle leaf Fig



Rhapis excelsa
Rhapis Palm



Buxus japonica
Japanese Box



Alpinia nutans
Dwarf Cardamom



Asparagus densiflorus
Myersii



Euphorbia wulfenii
Mediterranean Spurge



Carissa 'Desert Star'
Natal Plum



Cycad revoluta
Sago Palm



Asplenium australasicum
Birds Nest Fern



Monstera deliciosa
Swiss Chess Plant



Alcantarea imperialis
Bromeliad



Rosmarinus officinalis 'Prostratus'
Trailing Rosemary

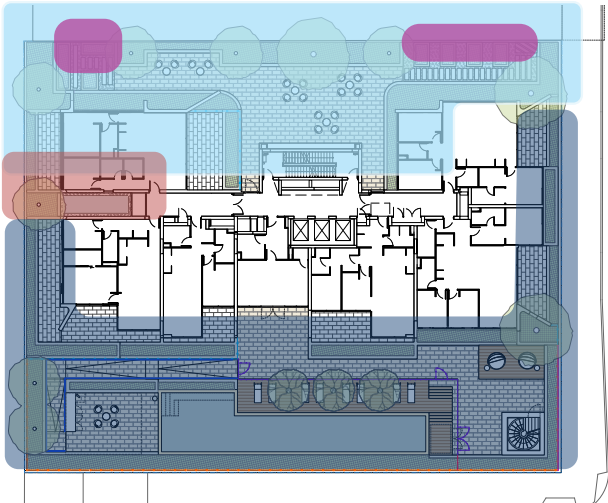


Miscanthus sinensis
Chinese Silver Grass



Pennisetum alopecuroides
Fountain Grass

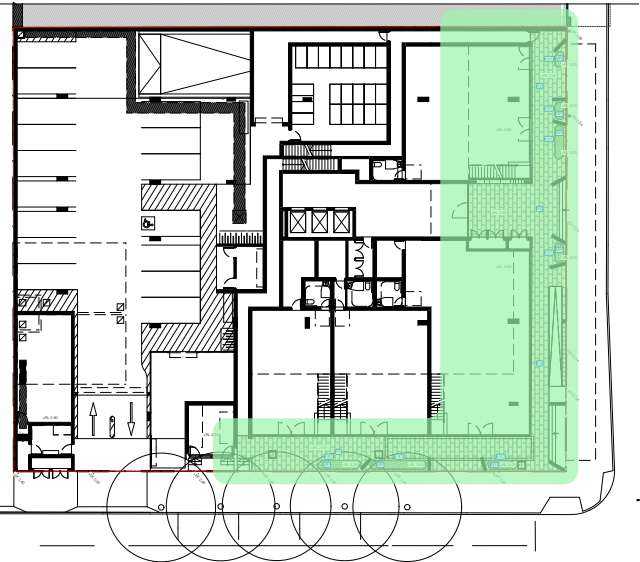
PODIUM KEY PLAN



LEGEND

- PT1 -POOL ZONE
- PT2 - WELLBEING OASIS
- PT3 - REFLECTIVE POND
- PT4 -GROUND FLOOR
- PT5 -COMMUNITY GARDENS

GROUND FLOOR KEY PLAN



PT 5 - COMMUNITY GARDENS						
VEGETABLE AND HERBS						
SYMBOL	BOTANICAL NAME	COMMON NAME	SHADE TOLERANCE	HEIGHT	POT SIZE	QUANTITY
ALLfis	Allium fistulosum	Spring Onion	Full sun/ Part shade	0.4m	140mm	5/ sqm
ALLsch	Allium schoenoprasum	Chives	Full sun/ Part shade	0.3m	140mm	8/ sqm
ANEgra	Anethum graveolens	Dill	Full sun	0.6m	140mm	5/ sqm
BETvul	Beta vulgaris spp.	Silverbeet	Full sun/ Part shade	0.8m	140mm	3/ sqm
BRAole	Brassica oleracea	Kale Tuscan	Full sun/ Part shade	0.5m	140mm	5/ sqm
BRArap	Brassica rapa subsp. Chinensis	Bok Choy	Full sun/ Part shade	0.3m	140mm	8/ sqm
CORsat	Coriandrum sativum	Coriander	Full sun/ Part shade	0.5m	140mm	5/ sqm
CYMcit	Cymbopogon citratus	Lemon Grass	Full sun/ Part shade	0.9m	140mm	3/ sqm
ERUves	Eruca vesicaria spp.	Rocket	Full sun/ Part shade	0.5m	140mm	5/ sqm
LACsat	Lactuca sativa spp.	Lettuce Mixed	Full sun/ Part shade	0.3m	140mm	5/ sqm
MENspp	Mentha spp.	Mint Mixed	Full sun/ Part shade	0.4m	140mm	8/ sqm
OCIspp	Ocimum spp.	Basil Mixed	Full sun	0.6m	140mm	5/ sqm
ORlvul	Origanum vulgare	Oregano	Full sun/ Part shade	0.2m	140mm	8/ sqm
PETori	Petroselinum crispum 'Italian'	Parsley Italian	Full sun/ Part shade	0.45m	140mm	5/ sqm
ROSoFF	Rosemarinus officinalis	Rosemary Chefs Choice	Full sun/ Part shade	0.8m	140mm	3/ sqm
SPlole	Spinacia oleracea	Baby Spinach	Full sun/ Part shade	0.3m	140mm	8/ sqm
THYvul	Thymus vulgaris	Thyme Common	Full sun	0.3m	140mm	8/ sqm

PLANTING SCHEDULE						
PT1 - POOL ZONE						
TREES						
SYMBOL	BOTANICAL NAME	COMMON NAME	PROVENANCE	HEIGHT	POT SIZE	QUANTITY
TRIlus	Tristaniopsis laurina 'luscious'	Luscious Water Gum	Native	7.0 - 12m	200L	3
PLUacu	Plumeria acutifolia	Frangipani	Exotic	5.0 - 7.0m	200L	3
SCREEN & HEDGE PLANTING						
SYMBOL	BOTANICAL NAME	COMMON NAME	PROVENANCE	HEIGHT	POT SIZE	QUANTITY
PODeLa	Podocarpus elatus	Plumb Pine	Exotic	2.0 - 3.0m	500mm	2/LM
STRnic	Strelitzia nicolai	Giant Bird of Paradise	Exotic	2.0 - 3.0m	300mm	2/sqm
SHRUBS, GRASSES & GROUNDCOVERS						
SYMBOL	BOTANICAL NAME	COMMON NAME	PROVENANCE	HEIGHT	POT SIZE	QUANTITY
ALObab	Aloe 'Baby Bush Yellow'	Baby Bush Yellow Aloe	Exotic	0.5m	200mm	5/ sqm
ALPnut	Alpinia nutans	Dwarf Cardamom	Exotic	0.9 - 1.5m	200mm	4/ sqm
ASPden	Asparagus densiflorus	Myersii	Exotic	0.8m	200mm	5/ sqm
BUXjap	Buxus japonica	Japanese Box	Exotic	1.0 - 1.2m	300 - 500mm	4/ sqm
CARdes	Carissa 'Desert Star'	Natal Plum	Exotic	0.5 - 1.0m	200mm	4/ sqm
CONcne	Convolvulus cneorum	Silverbush	Exotic	0.5m	140mm	5/ sqm
EUPwul	Euphorbia wulfenii	Mediterranean Spurge	Exotic	1.0 - 1.2m	200mm	4/ sqm
MISsin	Miscanthus sinensis	Chinese Silver Grass	Exotic	1.5m	140mm	4/ sqm
PENalo	Pennisetum alopecuroides	Fountain Grass	Native	0.6 - 0.9m	140mm	4/ sqm
ROSoFF	Rosmarinus officinalis 'Prostratus '	Trailing Rosemary	Exotic	0.1 - 0.3m	140mm	5/ sqm
SENman	Senecio mandraliscae	Blue Charksticks	Exotic	0.1 - 0.3m	140mm	5/ sqm
ZAMfur	Zamia furfuracea	Cardboard Plant	Exotic	0.5 - 1.0m	200mm	2 /sqm

PT2 - WELBEING OASIS						
TREES						
SYMBOL	BOTANICAL NAME	COMMON NAME	PROVENANCE	HEIGHT	POT SIZE	QUANTITY
FIClyr	Ficus lyrata	Fiddle Leaf Fig	Exotic	5m - 7m	200L	6
SCREEN & HEDGE PLANTING						
SYMBOL	BOTANICAL NAME	COMMON NAME	PROVENANCE	HEIGHT	POT SIZE	QUANTITY
RHAexc	Rhapis excelsa	Rhapis Palm	Exotic	2.0 - 3.0m	500mm	2/LM
ALOmacc	Alocasia macrorrhiza	Giant Taro	Native	2.0 - 3.0m	200mm	2/sqm
HELhot	Heliconia 'Hot Rio Nights'	Hot Rio Nights	Native	4m	200mm	2/sqm
SHRUBS, GRASSES & GROUNDCOVERS						
SYMBOL	BOTANICAL NAME	COMMON NAME	PROVENANCE	HEIGHT	POT SIZE	QUANTITY
ALCimp	Alcantarea imperialis	Bromeliad	Exotic	0.5 - 1.0m	500mm	2 /sqm
ALPnut	Alpinia nutans	Dwarf Cardamom	Exotic	0.9 - 1.5m	200mm	4/ sqm
ASPAus	Asplenium australasicum	Birds Nest Fern	Native	0.3 - 0.5m	140mm	4/ sqm
BLEsil	Blechnum 'Silver Lady'	Silver Lady Fern	Native	0.5 - 1.0m	200mm	4/ sqm
CYCreval	Cycad revoluta	Sago Palm	Exotic	0.5 - 1.0m	500mm	2 /sqm
DICrep	Dichondra repens	Kidney Weed	Native	0.1m	140mm	4/ sqm
LAMmac	Lamium maculatum 'Beacon Silver'	Spotted Dead Nettle	Exotic	0.2m	140mm	4/ sqm
LIGren	Ligularia reniformis	Tractor Seat Plant	Exotic	0.5 - 1.0m	200mm	4/ sqm
MONeli	Monstera deliciosa	Swiss Chess Plant	Exotic	1.2 - 1.5m	200mm	2 /sqm
NEOgra	Neomarica gracilis	Brazilian Walking Iris	Exotic	0.8 - 1.0m	140mm	4 /sqm
SANtri	Sansevieria trifasciata	Snake Plant	Exotic	1.0 - 1.5m	200mm	4 /sqm
VIOhed	Viola hederacea	Native Violet	Native	0.1m	140mm	5/ sqm

PT3 - REFLECTIVE POND						
TREES						
SYMBOL	BOTANICAL NAME	COMMON NAME	PROVENANCE	HEIGHT	POT SIZE	QUANTITY
ACEpal	Acer palmatum	Japanese Maple	Exotic	3.0 - 5.0m	200L	1

SHRUBS, GRASSES & GROUNDCOVERS						
SYMBOL	BOTANICAL NAME	COMMON NAME	PROVENANCE	HEIGHT	POT SIZE	QUANTITY
BUXjap	Buxus japonica	Japanese Box	Exotic	1.0 - 1.2m	300 - 500mm	4/ sqm
DICrep	Dichondra repens	Kidney Weed	Native	0.1m	140mm	4/ sqm
VIOhed	Viola hederacea	Native Violet	Native	0.1m	140mm	5/ sqm

PT4 - GROUND FLOOR						
SHRUBS, GRASSES & GROUNDCOVERS						
SYMBOL	BOTANICAL NAME	COMMON NAME	PROVENANCE	HEIGHT	POT SIZE	QUANTITY
ALObab	Aloe 'Baby Bush Yellow'	Baby Bush Yellow Aloe	Exotic	0.5 - 0.8m	200mm	5/ sqm
BUXjap	Buxus japonica	Japanese Box	Exotic	1.0 - 1.2m	300 - 500mm	4/ sqm
CONcne	Convolvulus cneorum	Silverbush	Exotic	0.5m	140mm	5/ sqm
MISsin	Miscanthus sinensis	Chinese Silver Grass	Exotic	1.5m	140mm	4/ sqm
PENalo	Pennisetum alopecuroides	Fountain Grass	Native	0.6 - 0.9m	140mm	4/ sqm
ROSoFF	Rosmarinus officinalis 'Prostratus '	Trailing Rosemary	Exotic	0.1 - 0.3m	140mm	5/ sqm
SENman	Senecio mandraliscae	Blue Charksticks	Exotic	0.1 - 0.3m	140mm	5/ sqm



CONTEXT

LANDSCAPE ARCHITECTURE

Context Landscape Design Pty Ltd
52-58 William Street
East Sydney NSW 2011 Australia
t. 61 2 8244 8900
e. context@context.net.au
w. context.net.au
ABN. 14 093 350 719